

SIEMENS



Rugged Communication

# RUGGEDCOM RSG907R & RSG909R

Compact multi-port IEEE 1588 switches  
with HSR and PRP support

Brochure

Edition  
01/2018

[siemens.com/rsg900r](http://siemens.com/rsg900r)

The RUGGEDCOM RSG907R and RSG909R are cost effective compact Ethernet multi-port HSR/PRP switches with IEEE 1588 support, offering a new level of redundancy for the digitalization era.

## Contents

Product overview and benefits	3
Technical data	4
Features	5
Use cases	6
Accessories / Ordering options	7

## Product overview and benefits

The RUGGEDCOM RSG907R and RSG909R, two full Gigabit switches in a compact design, offering both HSR and PRP functionality to mitigate the risk of communication disruptions and downtime. These rugged Gigabit switches are designed to operate in harsh environments with widely varying climatic and environmental conditions. Tested and certified to withstand extreme temperature, vibration and shock, the RUGGEDCOM RSG907R and RSG909R offer exceptional reliability for industrial applications such as electric utility substations, transportation systems and oil&gas.

The RUGGEDCOM RSG907R and RSG909R are ideal for applications that require high bandwidths and accommodate future network expansions. Three Redundant Network Access SFP ports providing ultimate flexibility in media and distance, with support for Gigabit bandwidth. The RSG907R connects up to 4 IEDs via 100BASE-FX fiber optics and RSG909R connects up to 6 IEDs via copper Ethernet on the Singly Attached Node ports.

Both products offer various network design options and cost savings through increased redundancy, reduced downtimes and high reliability.

### **HSR / PRP with Gigabit/s interfaces**

Avoid revenue loss by mitigating the risk of communication disruptions and downtime with a redundant fault tolerant network supporting high bandwidth.

### **SFP RNA ports**

SFP ports can be modified at any time allowing deployment flexibility for varying customer needs.

### **Power redundancy**

Maintain continuous safe and reliable operations even during power failures, diminishing the risk of revenue and data loss.

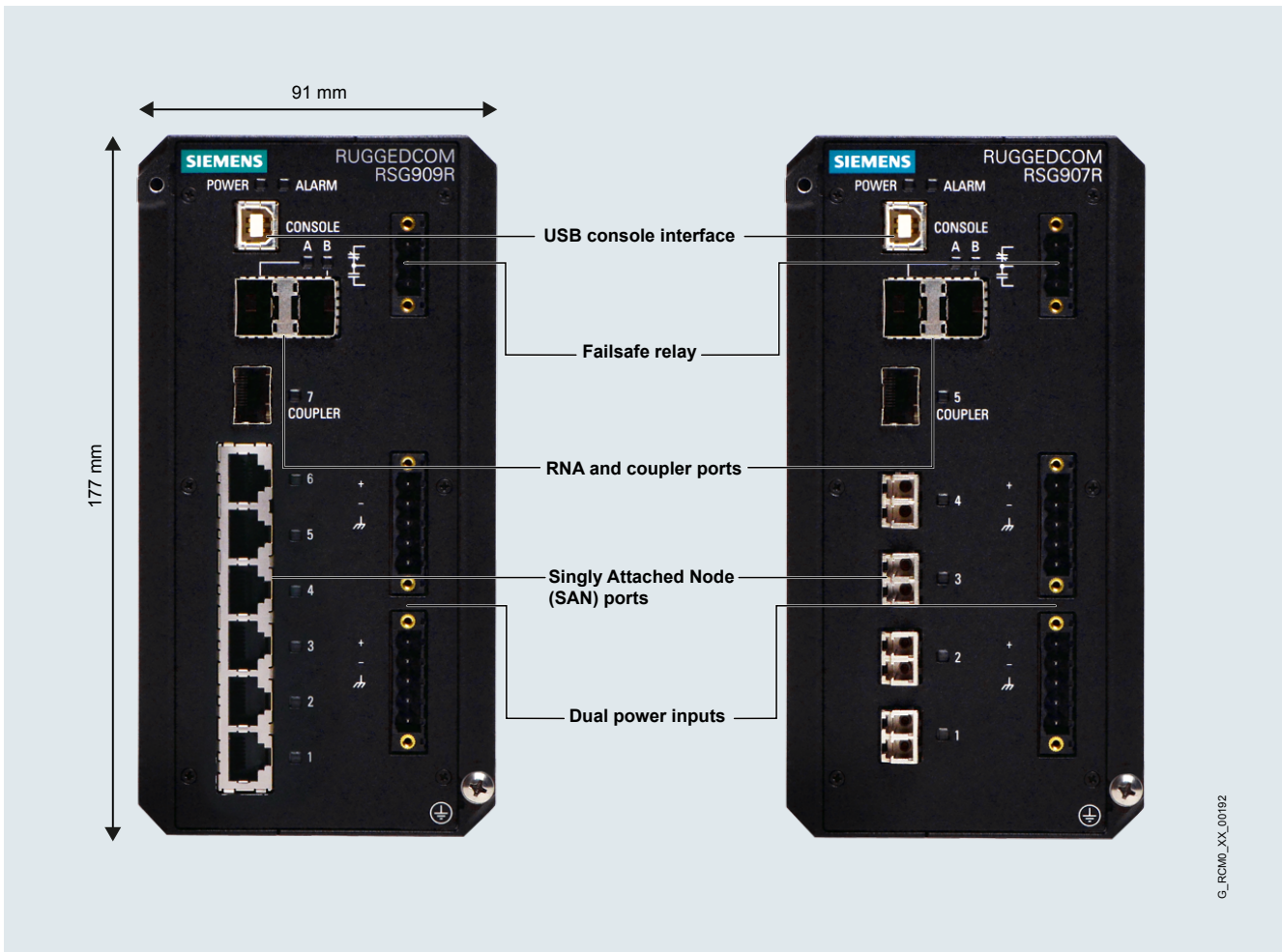
### **Full fiber solution**

Reduce failure rates due to increased immunity from electromagnetic phenomena.

### **IEEE 1588**

The RSG907R and RSG909R enable the creation of a future proof network with support for IEEE 1588 time synchronisation.

# Technical data



G\_RCM0\_XX\_00192

Technical data	RUGGEDCOM RSG907R	RUGGEDCOM RSG909R
<b>Ethernet interfaces</b>		
Ports	4 x 100BASE-FX + 3 x 1000 BASE-X (SFP)	6 x 10/100/1000BASE-T + 3 x 1000 BASE-X (SFP)
RNA uplinks (A / B) & coupler port	3 x 1 Gbit/s SFP ports	
Supported specifications	IEEE 1588	
<b>Power supply characteristics</b>		
Supported input voltage ranges	24/48 VDC (12 – 60 VDC) HI (85 – 264 VAC / 88 – 300 VDC)	
<b>Mechanical specifications</b>		
Dimensions (w x h x d) in mm	91 mm x 177 mm x 173 mm	
Weight	2.9 kg	
Mounting	DIN rail and panel mount	
<b>Ambient conditions</b>		
Operating temperature	-40° C to +85° C	
IP rating	IP40	
<b>Other features</b>		
IEEE 1588	Transparent Clock	

# Features

## Software

The RUGGEDCOM RSG907R and RSG909R both run on Rugged Operating System (ROS®) and deliver high performance switching.

ROS® supports the standard network technologies, such as Rapid Spanning Tree Protocol (RSTP), Multiple Spanning Tree Protocol (MSTP), Remote Monitoring (RMON), Simple Network Management Protocol (SNMP) and others, including proprietary protocol enhancements such as Siemens eRSTP (enhanced Rapid Spanning Tree Protocol) and Fast Root Failover (FRF).

## Software features

- Quality of service (802.1p) for traffic prioritization
- NTP time synchronization (client and server)
- Smart power management for PoE interfaces
- Port rate and Broadcast Storm Limiting
- Port configuration, status, statistics, mirroring
- Simple Management interface through WebUI and console interface
- Single file configuration ensures easy installation and configuration control

## HSR/PRP redundancy

The RUGGEDCOM RSG907R and RSG909R are multi-port Ethernet switches combined with an HSR/PRP redundancy box (RedBox) in a convenient compact design. IEEE 1588 function support enables the RUGGEDCOM RSG909R and the RSG907R to combine precision timing and network communication data on one network, reducing maintenance costs:

- Multi-port redundancy box allows for interconnection of up to 6 non-PRP or non-HSR end devices
- PRP/HSR coupling functionality to cover all types of redundant network topologies

## Cyber security

Cyber security is an important issue in many industries where advanced automation and communications networks play a crucial role in mission critical applications and where high reliability is of paramount importance. Key RUGGEDCOM RSG907R and RSG909R features that address security issues at the local area network level include:

- Passwords – support for multiple access levels with separate credentials for each level

- SSH / SSL – extends capability of password protection to add encryption of passwords and data as they cross the network
- Enable / disable ports – capability to disable ports so unauthorized devices can't connect to unused ports
- SNMPv3 – encrypted authentication and access security
- HTTPS – for secure access to the web interface
- 802.1x – to ensure only permitted devices can connect to the device
- MAC address authentication – control access to devices that do not support RADIUS

## Hardware

The RUGGEDCOM RSG907R and RSG909R have been specifically designed and certified for substation and distribution automation applications within electric power industry.

## Power Supply

- Integrated power supply with redundant inputs
- Universal high voltage range: 88 – 300 VDC or 85 – 264 VAC
- Universal low voltage power supply range: 12 – 60 VDC

## Configuration interface

The RUGGEDCOM RSG907R and RSG909R are equipped with a USB interface which enables easy in-field configuration and upgrading.

## Harsh environments

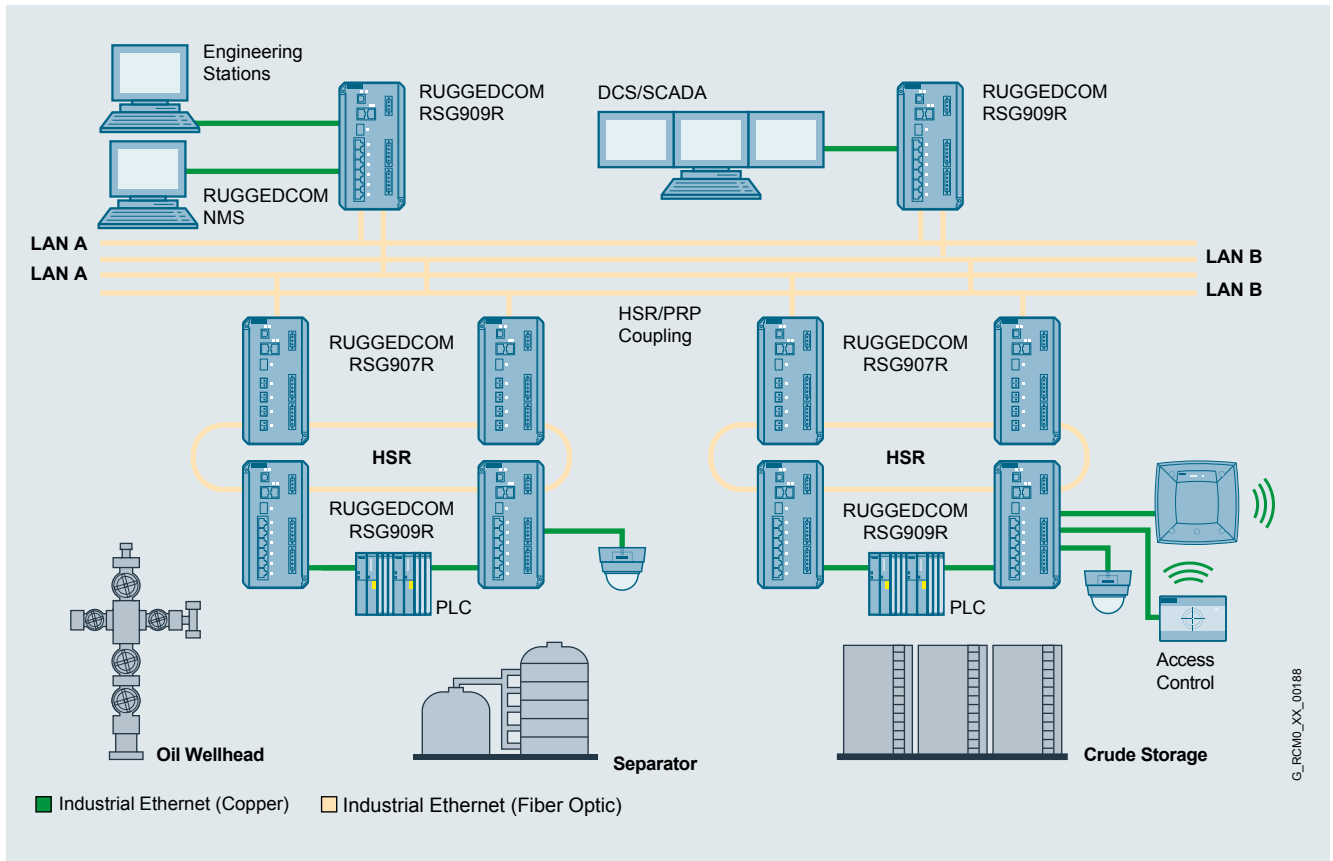
As with all RUGGEDCOM products, Highly Accelerated Life Testing (HALT) has been used in the early stages of product development to detect any design or performance issues.

- Temperature: -40° C to +85° C (fanless)
- Safety: CSA/UL 60950
- Vibration: IEC 60255-21-1, Class 2
- Shock: IEC 60255-21-2, Class 2
- Humidity: IEC 60068-2-30, up to 95% relative humidity

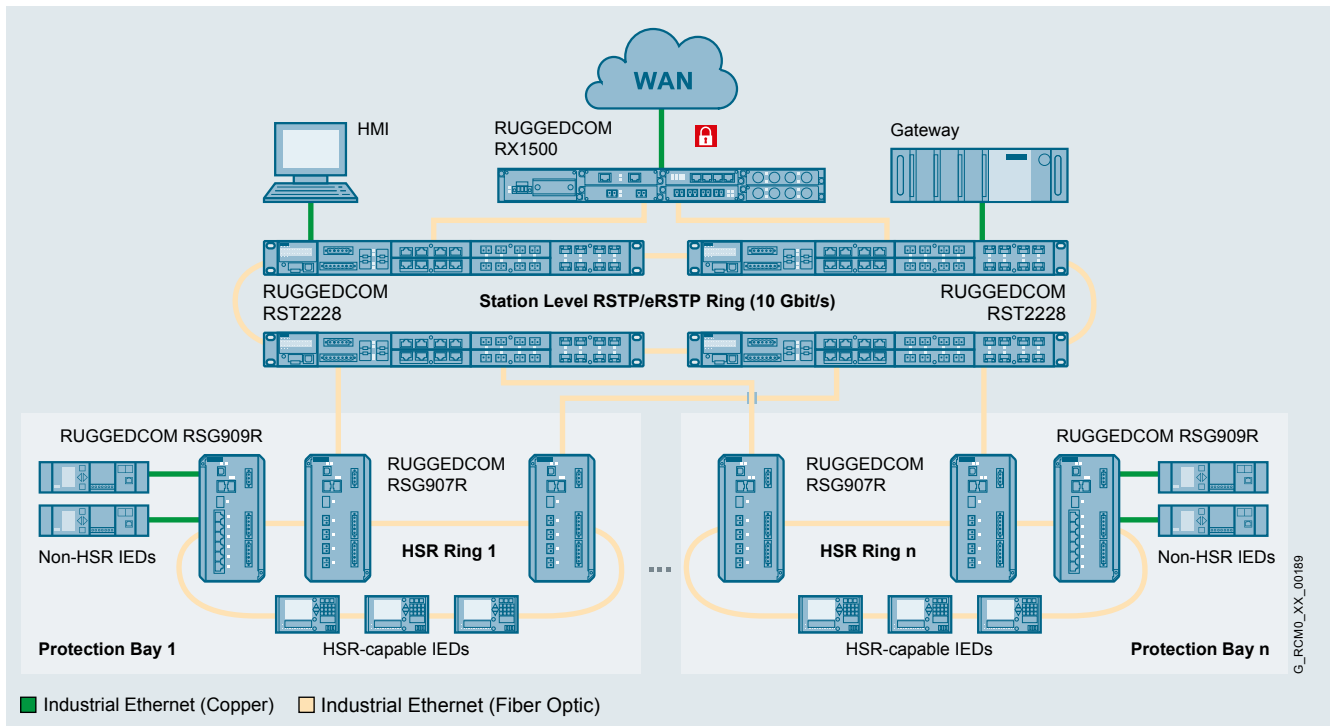
## Certifications

- IEC 61000-6-2 (industrial environments)
- IEC 61850-3 (electric substations)
- IEEE 1613 (electric substations)

# Use cases



Multi-port Redundancy Box (Redbox) allowing for interconnection of up to 6 non-PRP or non-HSR end devices.



RSG907R/RSG909R switches terminating each HSR ring can be directly connected to RSTP network via their coupling ports.

## Ordering options

Product	Article number			
RUGGEDCOM RSG909R	6GK6498-0RB00	.	.	N . - Z
RUGGEDCOM RSG907R	6GK6490-7RB00	.	.	N . - Z
Mounting kit				
DIN rail mounting kit		1		
DIN rail and panel mounting kit		3		
Power supply 1 + terminal block type				
24/48 VDC (12 – 60 VDC)			A	
HI (85 – 264 VAC / 88 – 300 VDC)			C	
Manufacturing modification				
Standard				0
Conformal coating				1

Examples	Order code
RUGGEDCOM RSG909R with high voltage power supply + DIN rail mounting kit + standard coating	6GK6498-0RB00-1AN0-Z
RUGGEDCOM RSG907R + DIN rail and panel mounting kit + conformal coating	6GK6490-7RB00-3AN1-Z

## Accessories

Accessories	Description	Article number
USB Console cable	USB 2.0 A type to B type Cable Assembly 10 feet / 3 meters	6GK6000-8DT01-0AA0
Panel mounting kit	Allows wall and other lateral mounting possible, requires assembly and even mounting plane	6GK6000-8MR00-0AA1
Power cable without lugs	Power Cable with NA Plug for pluggable terminal blocks (6 ft.) for RUGGEDCOM products	6GK6000-8BB00-0AA0

## Supported SFPs

Product name	Cable	Max. range	Temperature	Article number
SFP1132-1BX10R	SM, LC, Bi-Di	10 km	-40 - 85 °C	6GK6000-8FB51-0AA0
SFP1132-1BX10R	SM, LC, Bi-Di	10 km	-40 - 85 °C	6GK6000-8FB52-0AA0
SFP1132-1BX40R	SM, LC, Bi-Di	40 km	-40 - 85 °C	6GK6000-8FB53-0AA0
SFP132-1BX40T	SM, LC, Bi-Di	40 km	-40 - 85 °C	6GK6000-8FB54-0AA0
SFP1122-1SX	MM, LC	0.5 km	-40 - 85 °C	6GK6000-8FG51-0AA0
SFP1122-1SX2	MM, LC	2 km	-40 - 85 °C	6GK6000-8FE58-0AA0
SFP1132-1LX10	SM, LC	10 km	-40 - 85 °C	6GK6000-8FG52-0AA0
SFP1132-1LX25	SM, LC	25 km	-40 - 85 °C	6GK6000-8FG53-0AA0
SFP1132-1LX40	SM, LC	40 km	-40 - 85 °C	6GK6000-8FG57-0AA0
SFP1132-1LX70	SM, LC	70 m	-40 - 85 °C	6GK6000-8FG54-0AA0
SFP1132-1LX100	SM, LC	100 m	-40 - 85 °C	6GK6000-8FG55-0AA0
SFP1132-1LX115	SM, LC	115 km	-40 - 85 °C	6GK6000-8FE56-0AA0

\* SM = Single-mode, MM = Multi-mode, Bi-Di = Bi Directional

With the RUGGEDCOM Selector you can transfer the order number to the Siemens Industry Mall and order your products.

To use the RUGGEDCOM Selector for the selection and configuration of RUGGEDCOM products, visit: [siemens.com/ruggedcom-selector](http://siemens.com/ruggedcom-selector)



### FastConnect™ Cabling System

Stringent demands are placed on the installation of cables in an industrial environment. Siemens offers FastConnect™, a system that fulfills all these requirements: on-site assembly – quick, easy and error-free. For more information, visit: [siemens.com/fastconnect](http://siemens.com/fastconnect)

For more information, please visit:  
[siemens.com/ruggedcom](https://www.siemens.com/ruggedcom)

Siemens AG  
Process Industries and Drives  
Process Automation  
Postfach 48 48  
90026 Nürnberg  
Germany

Siemens Canada Limited  
300 Applewood Crescent  
Concord, Ontario, L4K 5C7  
Canada

© Siemens AG 2018  
Subject to change without prior notice  
Article No. 6ZB5531-OAT02-0BA0  
W-FPN8Z-RG-PA201 / Dispo 26000  
BR 0118 3. LMB 8 En  
Printed in Germany

## Security information

Siemens provides products and solutions with industrial security functions that support the secure operation of plants, systems, machines and networks.

In order to protect plants, systems, machines and networks against cyber threats, it is necessary to implement – and continuously maintain – a holistic, state-of-the-art industrial security concept. Siemens' products and solutions only form one element of such a concept.

Customer is responsible to prevent unauthorized access to its plants, systems, machines and networks. Systems, machines and components should only be connected to the enterprise network or the internet if and to the extent necessary and with appropriate security measures (e.g. use of firewalls and network segmentation) in place.

Additionally, Siemens' guidance on appropriate security measures should be taken into account. For more information about industrial security, please visit:  
[siemens.com/industrialsecurity](https://www.siemens.com/industrialsecurity)

Siemens' products and solutions undergo continuous development to make them more secure. Siemens strongly recommends to apply product updates as soon as available and to always use the latest product versions. Use of product versions that are no longer supported, and failure to apply latest updates may increase customer's exposure to cyber threats.

To stay informed about product updates, subscribe to the Siemens Industrial Security RSS Feed under:  
[siemens.com/industrialsecurity](https://www.siemens.com/industrialsecurity)

The information provided in this brochure contains descriptions or characteristics of performance which in case of actual use do not always apply as described or which may change as a result of further development of the products. An obligation to provide the respective characteristics shall only exist if expressly agreed in the terms of contract. Availability and technical specifications are subject to change without notice. All product designations may be trademarks or product names of Siemens AG or supplier companies whose use by third parties for their own purposes could violate the rights of the owners.

Scan this  
QR code  
for more  
information

